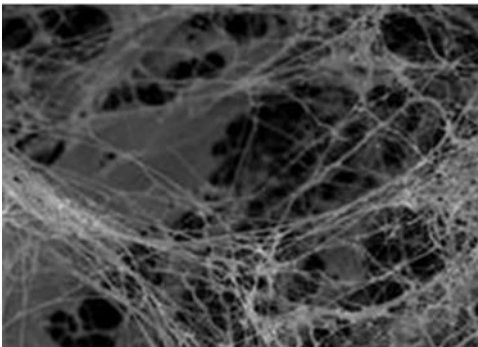


Biotechnology company specialized in cell imaging  
which provides HCA/HCS services

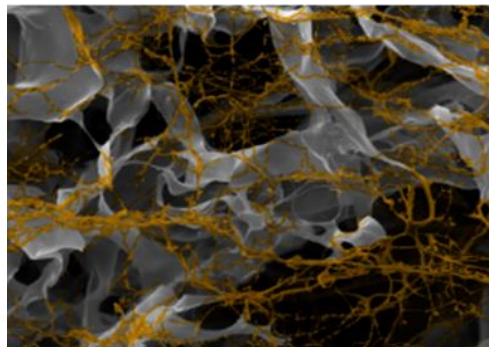


# BIOMIMESYS® Biofunctionalized hydrosccaffold for 3D cell culture

To better mimic the tissue  
microenvironment and provide more  
predictive tools for drug development



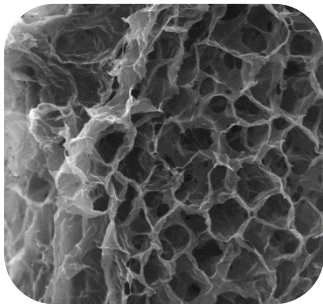
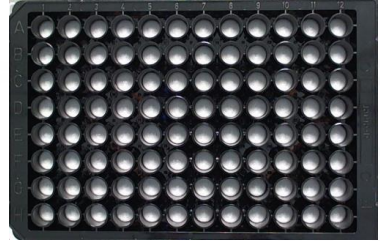
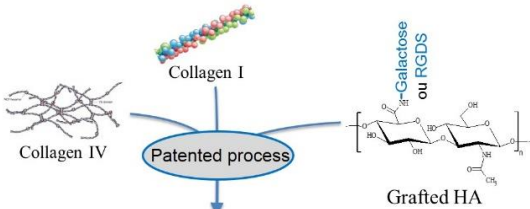
Decellularized *in vivo* ECM



BIOMIMESYS® Scaffold

**Precast matrix in a 96-WELL PLATE**

The only technology based on HA and ECM compound ready to use



BIOMIMESYS® hydrogel scaffold

- ✓ **RGDS or Galactosamine grafted Hyaluronic Acid**
- ✓ **Physiological** amount of ECM compound
- ✓ **Undenatured** collagen
- ✓ **Elastic modulus** regarding organs

*in vivo* like chemical composition and physicochemical properties (porosity , Elastic modulus...)

**Scalable hydrogel scaffold**

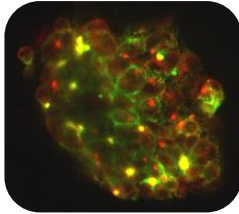
**Plate specifications:**

<b>Specifications</b>	<b>Compositions</b>	<b>Elastic modulus</b>
BIOMIMESYS® <i>Liver</i>	HA + RGDS, Galactosamine, Collagen I, Collagen IV	0.6 kPa
BIOMIMESYS® <i>Adipose tissue</i>	HA + RGDS, Collagen I, Collagen VI	0.45 kPa
BIOMIMESYS® <i>Oncology</i>	HA + Collagen I	0.4 kPa

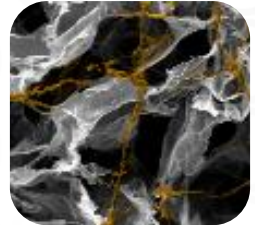
**1 - CHOOSE YOUR CELLS & MICROENVIRONNEMENT**

Cell lines  
Primary cells  
iPSCs

e.g. HepG2



ECM: Define  
- Composition  
- Elastic modulus  
- Porosity

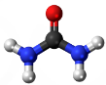


**2 - CHOOSE YOUR INDUCERS & INCUBATION TIME**

**Fixed Cells**

**Live Cells**

Small Molecules	Biologicals	Ingredients	Starvations	UV Radiations
-----------------	-------------	-------------	-------------	---------------



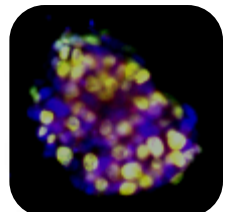
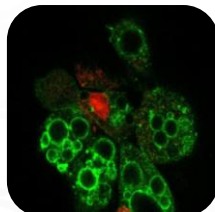
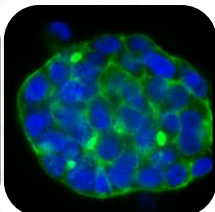
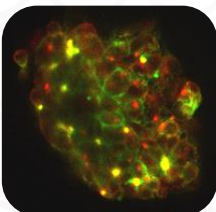
**3 - CHOOSE YOUR READ-OUTS**

Proliferation, apoptosis, cell motility, Cell structure, Stress, Protein analysis, mRNA analysis ...

**BIOMIMESYS® Liver**

**BIOMIMESYS® Adipose Tissue**

**BIOMIMESYS® Oncology**



MRP2; Actin;  
colocalization  
HepG2

Hoechst; Phalloidin  
HepG2

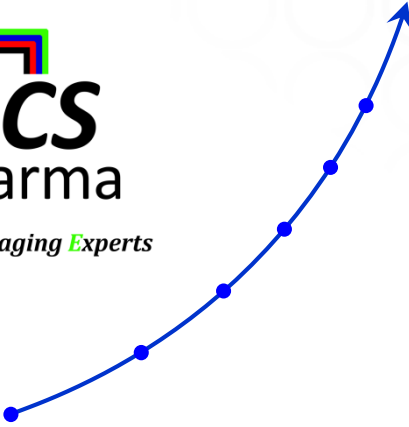
Perilipin (TG), nucleus  
Human Preadipocytes  
(HWP)

Hoechst ; EDU;  
mitotracker; colocalization  
HCT116

# Robotic Platform & innovative 3D models for HCA and HCS services



*Cellular Imaging Experts*



## OUR VALUES

☞ Expertise

☞ Flexibility

☞ Efficiency

☞ Transparency



Contact us for further information

[www.biomimesys.com](http://www.biomimesys.com)

[hello@biomimesys.com](mailto:hello@biomimesys.com)

+33 769 999 137



Lille



Rennes